
ME TOO

designed by Nurus D Lab

technical document

nurus

Me Too complements the body perfectly and offers smart solutions to the needs of work life. Me Too, whose every detail is designed with technology, experience and care, minimizes fatigue and protects your body while you are working. Me Too helps users adopt the habit of sitting correctly, supporting the upper part of the spine and the shoulders while protecting the neck. Even if the center of gravity changes, its base 70 cm in diameter prevents you from falling off and provides freedom of movement in a safe way.

Fluid Motion and Fluid Motion Plus mechanisms of Me Too allows advanced adjustment, and provides its user with a personalized and comfortable work environment.



reddot design award
winner 2008



design



Nurus D Lab

Nurus D Lab (Nurus Design Lab) is active in every stage; from determining the design strategy of the brand to putting the product on market. During the process of product development, Nurus Design Lab works cooperatively and in concert with other designers. The starting points of designs are the needs of users, and function. Nurus D Lab keeps itself up-to-date by following scientific and technological developments during the process that proceeds with concern for ergonomics, sustainability and aesthetics.



Being human means
thinking of our future
as much as we think of
our own needs.

Me Too holds the German Quality Approval (GS) Certificate and the Certificate of Conformity with Turkish Standards (TSE). 28.7% of the material used in its manufacture is recycled. Me Too is 95.3% recyclable and 99.9% of the materials used in its manufacture can be reused for other purposes. The fabrics used in its manufacture are internationally certified. The fabrics and cushions have undergone durability tests.



versions

me too fluid motion plus®



Me Too Fluid Motion Plus is a customized performance task chair designed for long work hours with its technological features and an enhanced flexible structure.

In addition to its other mechanisms, Fluid Motion Plus allows 7-degree front tilt, and its backrest support can be fixed in 5 different positions.

The seat-depth feature of Me Too helps users with different leg lengths maintain a comfortable and correct sitting posture.

me too fluid motion®



Me Too Fluid Motion allows backrest tilt of 25-30 degrees and can be locked in 4 different positions.

Its armrests, armrest pads and neck support can be adjusted according to body measurements. Thanks to its advanced structural flexibility, it becomes one with your body as you move.

It adjusts itself to the physical features of its user, eliminating the fatigue caused by incorrect sitting posture.

versiyonlar

me too fixed®



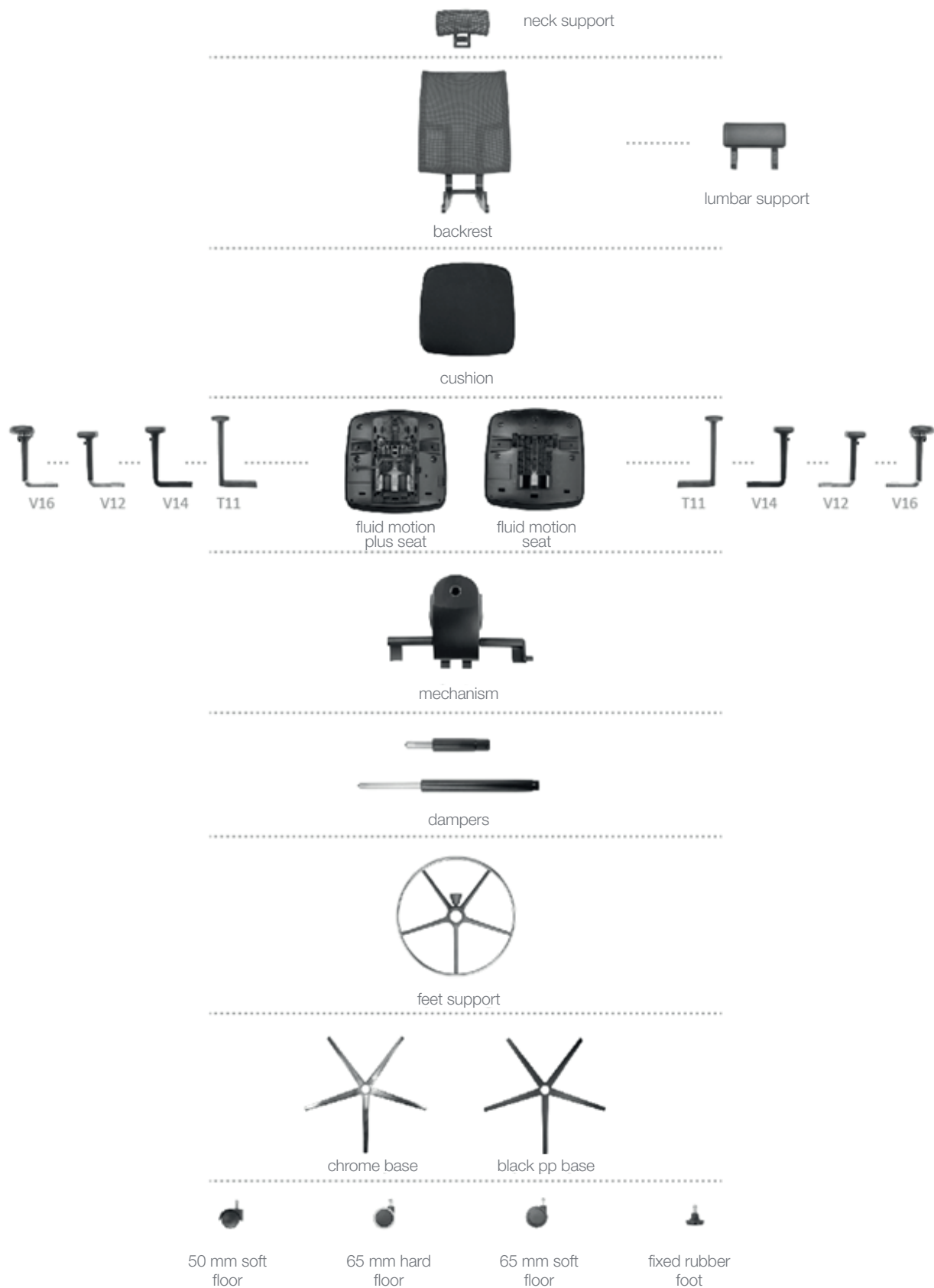
With its mechanism that allows quick adjustments, Me Too Fixed provides comfortable usage in shared work spaces.

me too high®



With its mechanism that allows quick adjustments, Me Too Fixed High maintains comfort in work areas that have high desks, such as information desks.

components



leg types

polypropylene base



aluminum base



caster types

- D:50mm casters- for soft floor
- D:65mm casters- for hard floor
- D:65mm casters- for soft floor
- Fixed rubber foot

armrest types

T11



- 35mm width adjustment
- PP armrest pad
- Plastic armrest carrier

V14



- 100 mm height adjustment
- 35 mm width adjustment
- Soft PU armrest pad
- Plastic armrest carrier

V12



- 100 mm Height Adjustment
- 35 mm Width Adjustment
- ± 30 mm Armrest pad depth adjustment
- PU Armrest pad rotatable by 30° to each side in steps of 15° each
- Aluminum armrest carrier

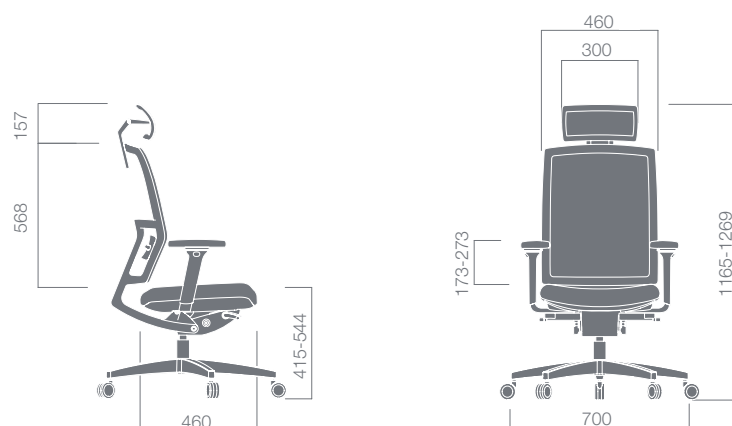
V16



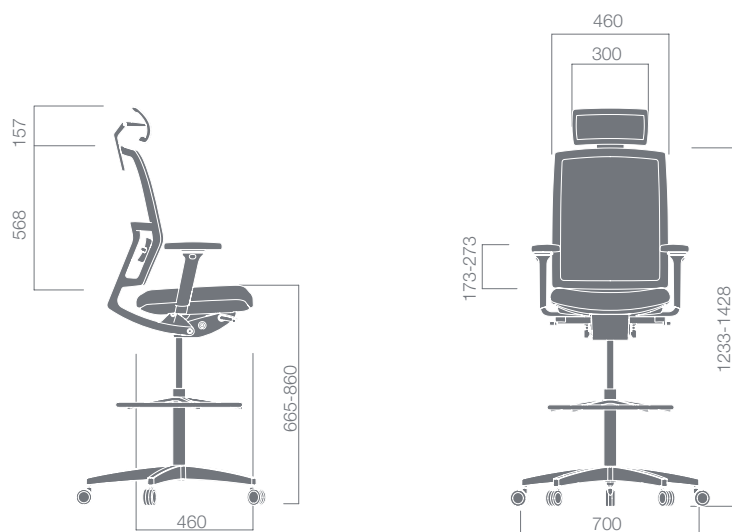
- 100 mm height adjustment
- 35 mm width adjustment
- ± 30 mm armrest depth adjustment
- PU Armrest pad rotatable by 360°
- Aluminum armrest carrier

measurements

me too fluid motion plus / fluid motion

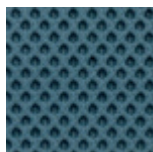


me too high

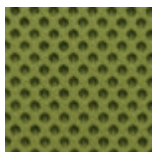


materials

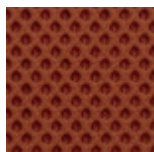
mesh - backrest



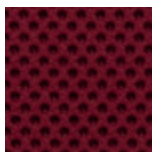
NU-MS1-66063



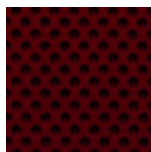
NU-MS1-68056



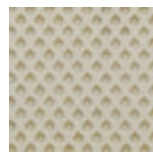
NU-MS1-63034



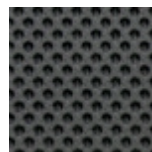
NU-MS1-64089



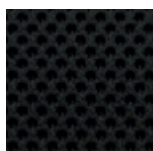
NU-MS1-61130



NU-MS1-60061



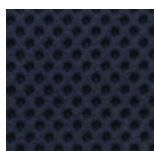
NU-MS1-60011



NU-MS1-60025



NU-MS1-60999

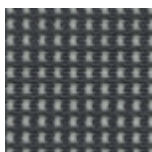


NU-MS1-66064

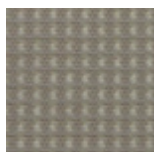
mesh - 2



NU-MS2-010

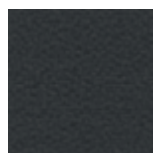


NU-MS2-110

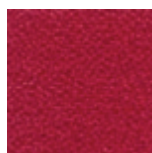


NU-MS2-025

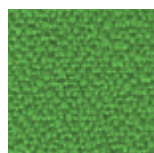
abric – upholstered backrest



NU-FB1-8033



NU-FB1-4011



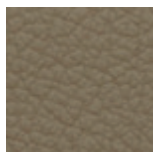
NU-FB1-7048



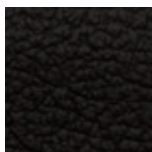
NU-FB1-1005

materials

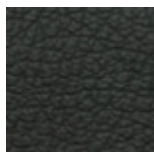
genuine leather – upholstered backrest – cushion



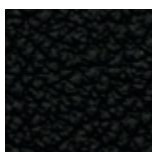
NU-LR1-1540



NU-LR1-1865

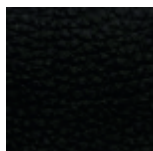


NU-LR1-9571

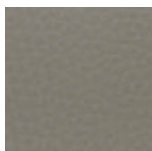


NU-LR1-9900

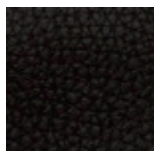
artificial leather – seat cushion



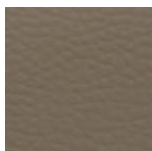
NU-EL1-9900



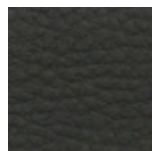
NU-EL1-9510



NU-EL1-1865



NU-EL1-117996



NU-EL1-9571

malzemeler

fabric – seat cushion



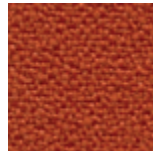
NU-FB1-1005



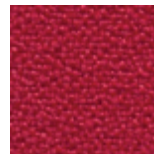
NU-FB1-1008



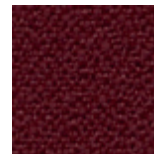
NU-FB1-3005



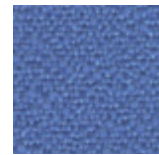
NU-FB1-4004



NU-FB1-4011



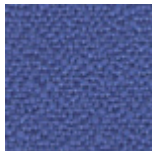
NU-FB1-4017



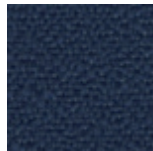
NU-FB1-6003



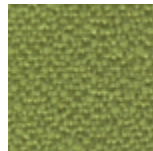
NU-FB1-6006



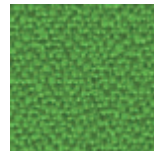
NU-FB1-6016



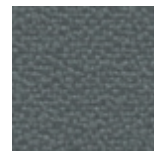
NU-FB1-6098



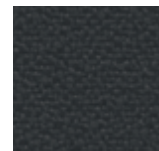
NU-FB1-7021



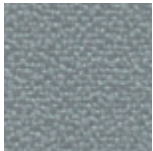
NU-FB1-7048



NU-FB1-8010

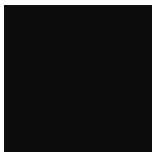


NU-FB1-8033



NU-FB1-8078

plastic - body



BLACK BODY

warnings

Suggestions for use

- Oily or dye materials should not be applied on the fabric and leather parts of the sofas.
- The sofas should not be continually exposed to sunlight. Sunlight may cause discoloration on fabrics.
- The product should not be exposed to fire or water.
- The product should not be kept in humid areas.
- The products can easily be cleaned with damp and dry cloths.
- The product should not be used for any purpose other than its function.
- Heavy weights that cannot be supported by the product should not be placed on the product.
- Sharp objects should be kept off from the sofas.

